

VCU

Smarter fleet. Smarter farming.



SMARTER FLEET. SMARTER FARMING.

Connect your vehicles to the autonomous ecosystem with the VCU.

AgXeed is shaping the future of farming with practical, reliable autonomous solutions. We start from respect: for farmers, for the land, and for future generations. Our technologies are built on a true understanding of farming, taking away complexity and giving back control, efficiency, and freedom to farmers.

The Vehicle Control Unit (VCU) connects your existing fleet with TraXwise, including standard machines in part of one smart system. More than a steering system, the VCU ensures your fleet can run highly automated pre-planned operations exactly as intended.



THE VCU PROVIDES CONTROL AND FREEDOM.

Are you ready to go from...

- ✓ Planning on the spot
- ✓ Pre-planning on different places and times
- ✓ Scattered systems and brands
- ✓ Relying on driver skill
- ✓ High operator workload
- ✓ No clear overview
- ✓ Complex technology mix

to...

- ✓ Pre-planning every operation in advance (both route and implements)
- ✓ pre-planning in one place
- ✓ one connected multi brand system
- ✓ consistent execution, exactly as intended
- ✓ less stress and more efficiency
- ✓ live monitoring of your whole farm
- ✓ one simple, farmer-friendly system



One ecosystem for your entire fleet.

The Vehicle Control Unit (VCU) is a compact retrofit module that makes your current vehicles part of AgXeed's highly automated ecosystem. Mounted on top of the cab and connected via ISOBUS TIM, it links the tractor's controls to TraXwise. This way standard vehicles can carry out pre-planned operations including turns and implements in a highly automated way.



TRAXWISE

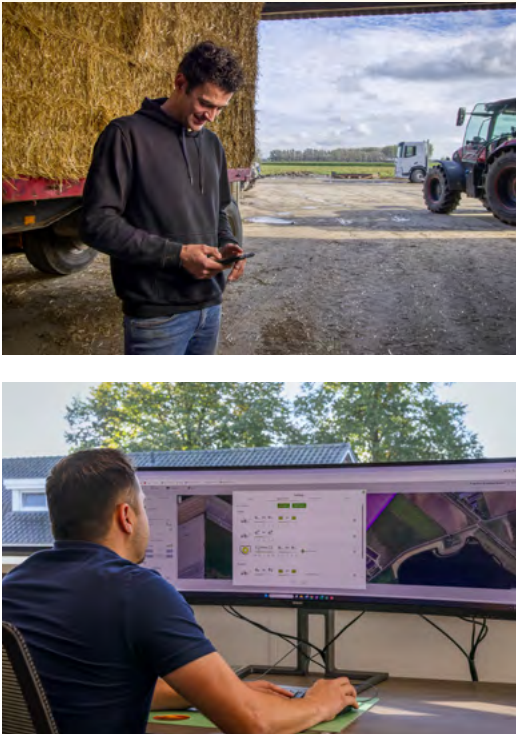
The heart of autonomous farming:

TRAXWISE

We're here to give farmers more freedom and control by making autonomy practical and reliable. Our secret to making autonomous farming simple, efficient, and ready for today? TraXwise.

TraXwise the smart platform at the heart of every AgXeed solution. It connects pre-planning, monitoring, and data into one clear system, giving farmers grip on their work and peace of mind in every season. It's all about planning and control: you can easily pre-plan tasks across seasons and different fields, remotely monitor the progress live in the field with data and alerts, and store all results for full transparency. TraXwise links every AgBot, tractor, implement, and operator in one smart system: plan your work once, from seeding to mowing, and it gets done precisely as you intended, every time.

TraXwise is scalable and compatible with any machine, making it easy to start small and expand step by step. Farmers can test it through a local dealer and experience the benefits of autonomy first-hand!



The key strengths of TraXwise:



Pre-planning
including pre-planning
of implements



Live monitoring
realtime tracking
and control



Data management
store, share,
analyze

HOW IT WORKS



Pre-plan
operations,
driving lines,
implement
and headland
sequences in
TraXwise



Send the
input directly
to the tractor
via the VCU



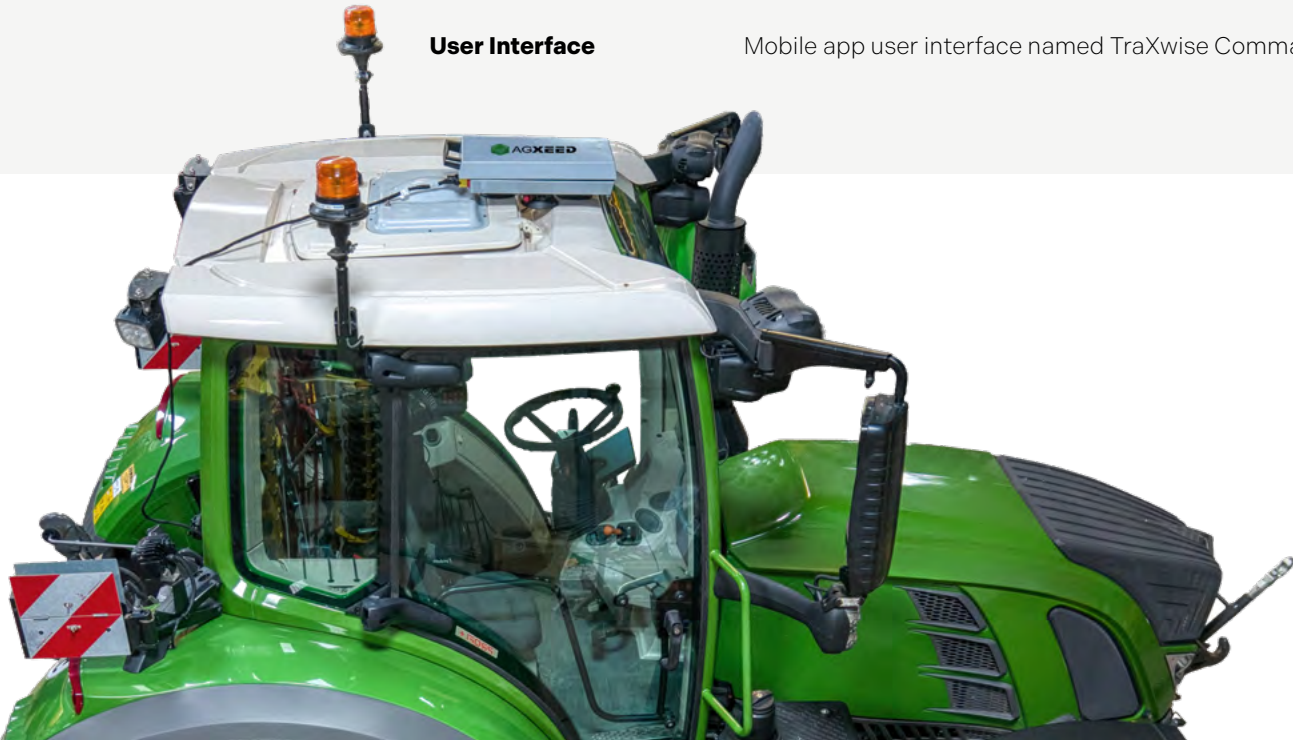
The VCU
takes over
steering,
machine and
implement
control through
ISOBUS TIM



Execution,
monitoring,
and data flow
back into
TraXwise in
real time

VCU SPECIFICATIONS

| Component | Description |
|---|---|
| Housing | Compact, mobile housing with handle for easy transport. Includes groundplate for tractor mounting. |
| Communication Module | Enables bidirectional data transfer and RTK correction. |
| Localisation & Steering Module | Includes IMU, steering controller, and GNSS receiver (standard 8-10 min fallback, optional unlimited fallback). |
| Robotics Module | Controller running the AgXeed Robotics Software. |
| Cable Harness | Connects to ISOBUS in-cab and power supply (25 A DIN 9680) and isobus incap extension. |
| Optional: 2 Cabled Cameras | Heavy-duty wide-angle (180°) camera pack for enhanced visibility. |
| Mobile Connectivity | iOS and Android supported via mobile app. |
| User Interface | Mobile app user interface named TraXwise Command. |



We help make your work lighter with smart, autonomous vehicles;
giving you freedom to farm and power to grow on your own terms.

FREEDOM TO FARM POWER TO GROW



Contact us for more info and
a dealer demo in your field!

www.agxeed.com

